



# GMT MONTHLY MEMBERSHIP PROGRESS REPORT

Results as of: 3/31/2019

Multiple District 30

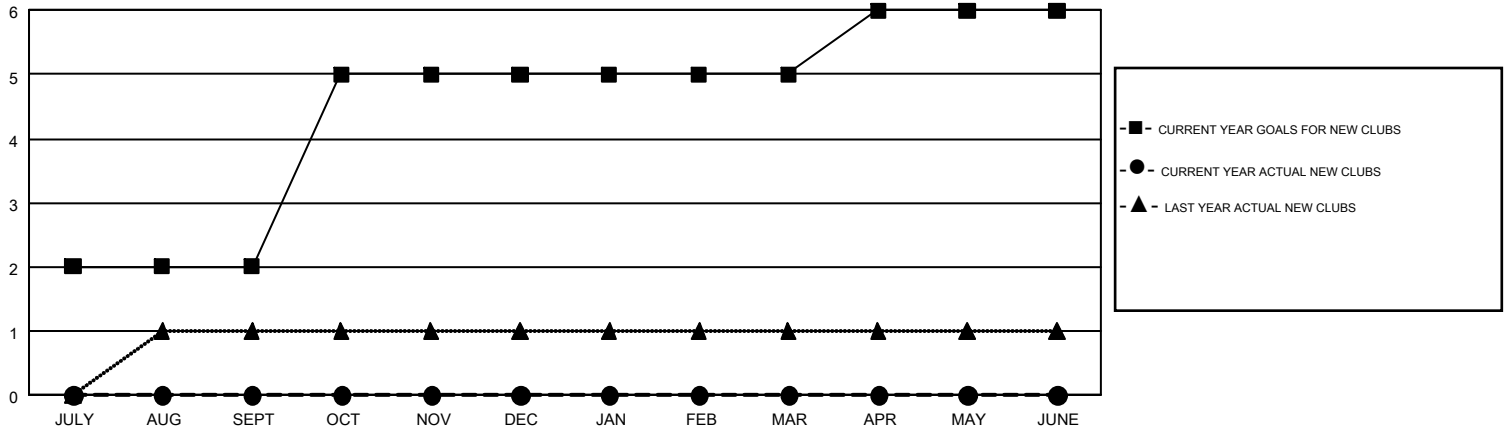
LOCATION: MISSISSIPPI

GMT: CARLTON LLOYD

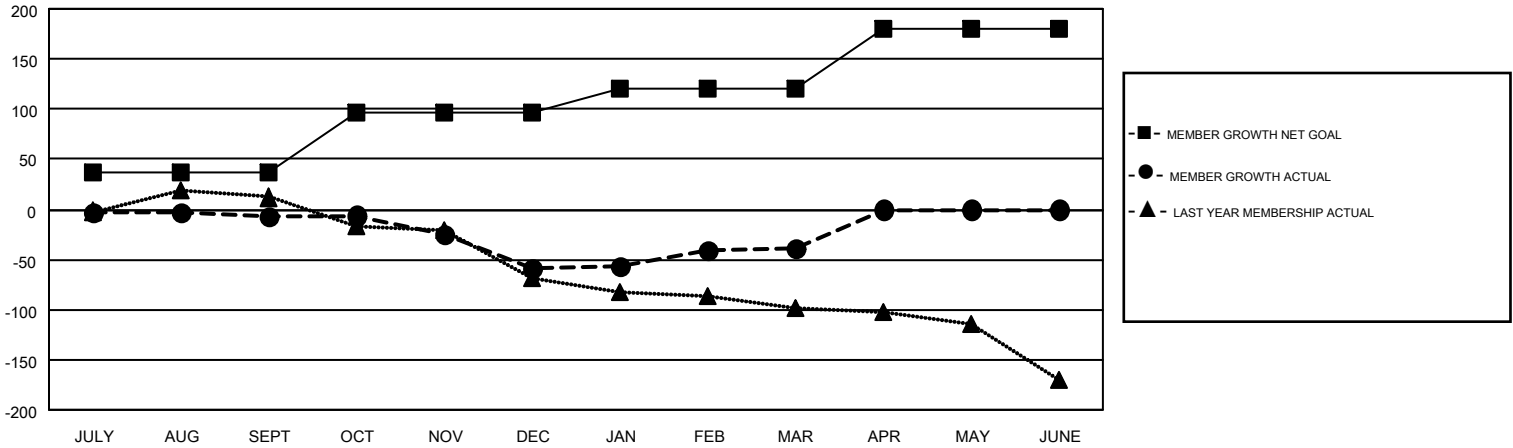
GMT CA 1

| Clubs                 |               |           |               | Members               |                        |                      |  |
|-----------------------|---------------|-----------|---------------|-----------------------|------------------------|----------------------|--|
| RESULTS FOR 2018-2019 |               |           |               | RESULTS FOR 2018-2019 |                        |                      |  |
| QUARTER               | NEW CLUB GOAL | NEW CLUBS | DROPPED CLUBS | QUARTER               | MEMBER GROWTH NET GOAL | MEMBER GROWTH ACTUAL | DROPPED MEMBERS ACTUAL (including transfers) |
| JULY/AUG/SEPT         | 2             | 0         | 1             | JULY/AUG/SEPT         | 36                     | 54                   | 41   |
| OCT/NOV/DEC           | 3             | 0         | 0             | OCT/NOV/DEC           | 60                     | 49                   | 89   |
| JAN/FEB/MAR           | 0             | 0         | 0             | JAN/FEB/MAR           | 25                     | 56                   | 37   |
| APR/MAY/JUNE          | 1             | 0         | 0             | APR/MAY/JUNE          | 60                     | 0                    | 0  |

GOALS AND ACTUAL NEW CLUBS CUMULATIVE



GOALS AND ACTUAL MEMBERS CUMULATIVE



|                        |   |                                 |                |
|------------------------|---|---------------------------------|----------------|
| DROPPED CLUBS: 1       | 49 CLUBS OF 103 ADDED 1 OR MORE NEW MEMBERS | <u>GENDER DISTRIBUTION</u>      |                |
| <u>DROPPED MEMBERS</u> |   | MALE                            | 1,577 (72.98%) |
| DECEASED               | 20  | FEMALE                          | 584 (27.02%)   |
| CLUB CANCELLED         | 0   | TOTAL FAMILY UNIT MEMBERS       | 267            |
| OTHER                  | 147   | FAMILY MEMBERS PAYING HALF DUES | 135            |
| TOTAL                  | 167   |                                 |                |

[CLICK HERE FOR CUMULATIVE MEMBERSHIP DATA](#)